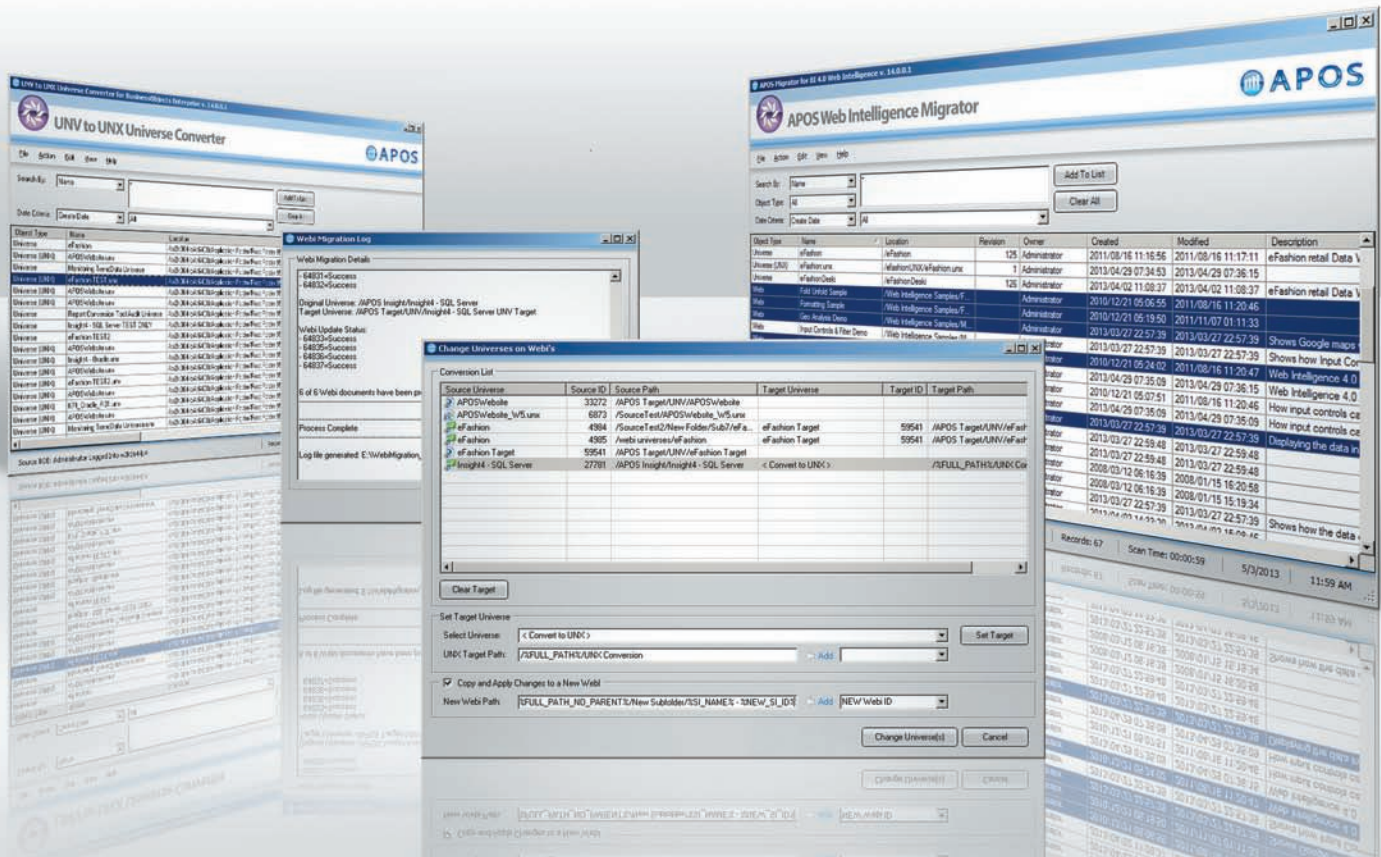




Migration Acceleration for SAP BusinessObjects BI 4



Experience the benefits of SAP BusinessObjects BI 4 more fully and quickly. APOS Migration Acceleration products help you realize ROI faster by automating and simplifying many of the most labor-intensive migration tasks:

- Convert UNV universes to UNX universes in bulk
- Repoint Web Intelligence reports to UNX universes in bulk
- Migrate Crystal Reports 2011 to Crystal Reports for BI Enterprise in bulk
- Schedule Web Intelligence reports, set/reconstruct prompts from .NET applications
- Convert REP instances before you migrate them to BI 4.1
- Migrate instances in high volume to BI 4.1
- Leverage your Desktop Intelligence investment in BI 4.1



Well Managed BI



Migration Acceleration for SAP BusinessObjects BI 4

Universe, Web Intelligence, Desktop Intelligence & Crystal Reports Products

APOS Converter for BI 4 Universes	Scan your system for existing UNV universes, select them, and convert in bulk to UNX universes.
APOS Migrator for BI 4 Web Intelligence	Scan your system for Web Intelligence reports, select them, specify the new UNX universe to use, and repoint the reports in bulk.
APOS Migrator for BI 4 Crystal Reports	Scan your system for Crystal Reports 2011 objects, select them, specify new database connections in bulk, and convert them in bulk to Crystal Reports for Enterprise 4 objects.
APOS Storage Center for Migration	Convert REP instances before you migrate them. Migrate large volumes of instances using this proven, robust solution.
APOS .NET Plug-In for Web Intelligence	Schedule SAP BusinessObjects Web Intelligence reports from .NET applications. Set prompt and format defaults. Reconstruct prompts on the fly.
APOS Publisher for DCP	Publish Desktop Intelligence reports using BI 4.1 data sources.

Migrate with Confidence – APOS Well Managed BI Solutions

The APOS suite of well managed BI solutions help you prepare for migration, manage migration tasks, and manage your new deployment:

APOS Insight	<ul style="list-style-type: none"> • System usage analysis • Inventory system for migration planning • Pre- and post-migration system analysis for migration validation • Impact analysis to understand which reports will be impacted by the migration
APOS Administrator	<ul style="list-style-type: none"> • Prepare your source system for migration using bulk administration • Manage and rebuild of your target system in bulk • Rebuild your BI 4 security structure in bulk • Rapid reconstruction of recurring schedules
APOS Storage Center	<ul style="list-style-type: none"> • Reduce migration scope and volume by archiving and purging instances • Automatically export archived instances to neutral format - including Desktop Intelligence • Mitigate risk by safeguarding documents and instances for audit and compliance purposes
APOS Publisher	<ul style="list-style-type: none"> • Export Web Intelligence reports to familiar Desk Intelligence HTML format • High-volume scheduling, advanced bursting • Statement generation - execute tightly controlled document production, publishing and distribution workflows

A Well Managed Migration Begins with a Well Managed BI Deployment.

Since its beginning in 1992, APOS Systems has evolved from a custom business application development shop to a global provider of solutions promoting well managed business intelligence.

APOS solutions improve the return on your BI investment through enhanced BI platform management, letting you automate and simplify the administration, auditing and monitoring of your BI platform, providing robust document instance and object archive and restore capabilities, enabling tightly controlled document production, publishing and distribution workflows, and promoting agile BI practices.

APOS solutions simplify, automate, complement and extend BI practices, and focus BI processes for greater agility in your organization's decision-making capabilities.

PARTNERS



1118-100 Conestoga College Blvd.,
Kitchener, ON, Canada N2P 2N6

Tel: 519.894.APOS (2767)

Email: info@apos.com

www.apos.com