

Webinar

Solution Update

SAP Analysis for Office



Today's Session

Key Topics

- Introductions
- SAP Analysis for Office Solution Update
- Related APOS Solutions
- Q&A – see webinar console

Today's Presenters



ALLAN PYM

Chief Operating Officer
APOS



JEANNE BIGONNET

Product Manager, Analytics
SAP

Who is APOS?

- Formed in 1992
- Enabling BI data connectivity, platform management, administration, migration, governance and compliance
- Simplifying, automating, extending SAP BusinessObjects and SAP Analytics Cloud
- Strategic SDK development and consulting
- Hundreds of customers globally



APOS



**SAP
BusinessObjects**



Hybrid BI



**SAP
Analytics Cloud**



**EXTEND
SAP ANALYTICS**



HOUSEKEEPING



**You will have
access to the
slides via
email**



**You will get
the recording
within 24
hours**



**Tell us how
we did in the
survey**



Jeanne Bigonnet
Product Manager, Analytics
SAP



Microsoft Office integration

Jeanne Bigonnet, SAP
June, 2022

Public

SAP Analysis for Microsoft Office One Product – Two Editions

SAP Analysis for Microsoft Office

```
graph TD; A[SAP Analysis for Microsoft Office] --> B[Standard Edition]; A --> C[Edition for SAP Analytics Cloud]
```

Standard Edition

Included with the license for

- SAP BusinessObjects Enterprise
- SAP BusinessObjects Planning and Consolidation

Edition for SAP Analytics Cloud

Included with the subscription to

- SAP Analytics Cloud Enterprise

SAP Analysis for Microsoft Office - Since 2.8SP9 (June 2021)

	SAP Analysis for Office (AO) Standard Edition	SAP Analysis for Office (AO) for SAC
	Included with license for BusinessObjects and BPC	SAC Subscription
Analysis – SAC connectivity incl. SAC live connection to BW (S/4), BPC, HANA	✓	✓
Analysis – direct BW (S/4), BPC, HANA connectivity incl. access to NW repository/storage	✓	✓ 2.8 SP9
Analysis – direct BI platform connectivity incl. access to repository/storage	✓	✓ 2.8 SP9
BEx Workbook Conversion	✓	✓ 2.8 SP9
Analysis – PowerPoint integration	✓	⊘*
Analysis – BI platform scheduling	✓	⊘*
EPM add-in & BPC activity pane/plug-in (+ CPM add on)	✓	⊘*

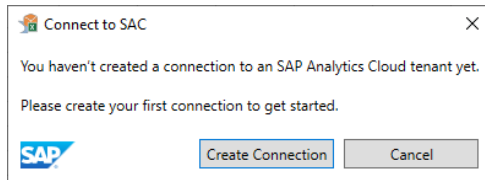
*not planned

SAP Analysis for Office (AO) for SAC Improvements (1/3)

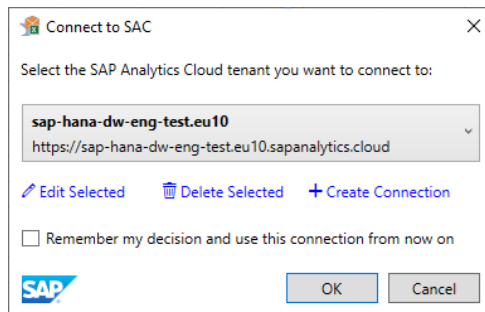
Allows BW/Hana direct access from SAP Analytics Cloud

Allows BOE direct access from SAP Analytics Cloud

- 1) At least one SAP Analytics Cloud connection needs to be maintained:



- 2) SAP Analytics Cloud connection can be changed and also remembered to avoid initial pop-up:



Setting to revert checkbox:

AutoConnectToLastSelectedSACSystem

- 3) Pop-up will not appear in case workbook already connects to an SAP Analytics Cloud data provider.

Example:

Workbook contains BW direct data provider → Pop-Up for SAC logon triggered

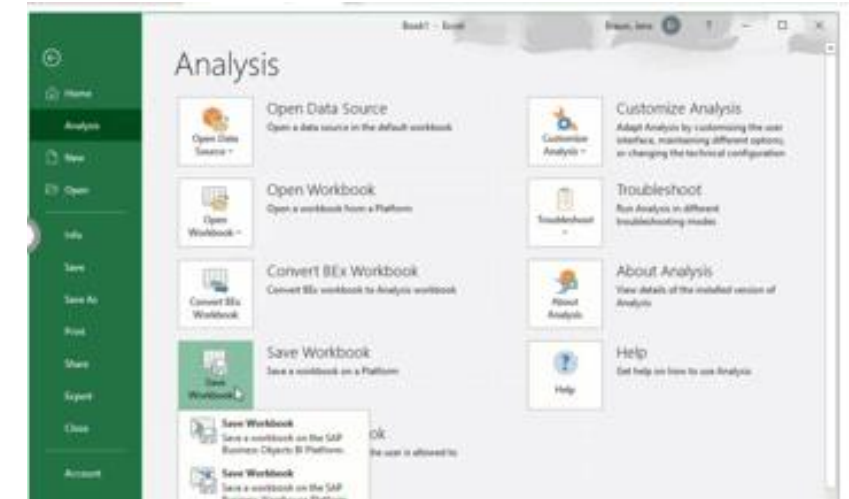
Workbook contains BW data provider via SAC live connection → No extra Pop-Up for SAC logon triggered

SAP Analysis for Office (AO) for SAC Improvements (2/3)

Allows BW/Hana Open/Save Menus in Analysis tab

Allows BOE Open/Save Menus in Analysis tab

Allows Convert Bex Workbook in Analysis tab



SAP Analysis for Office (AO) for SAC Improvements (3/3)

From AO standard to AO for SAC edition

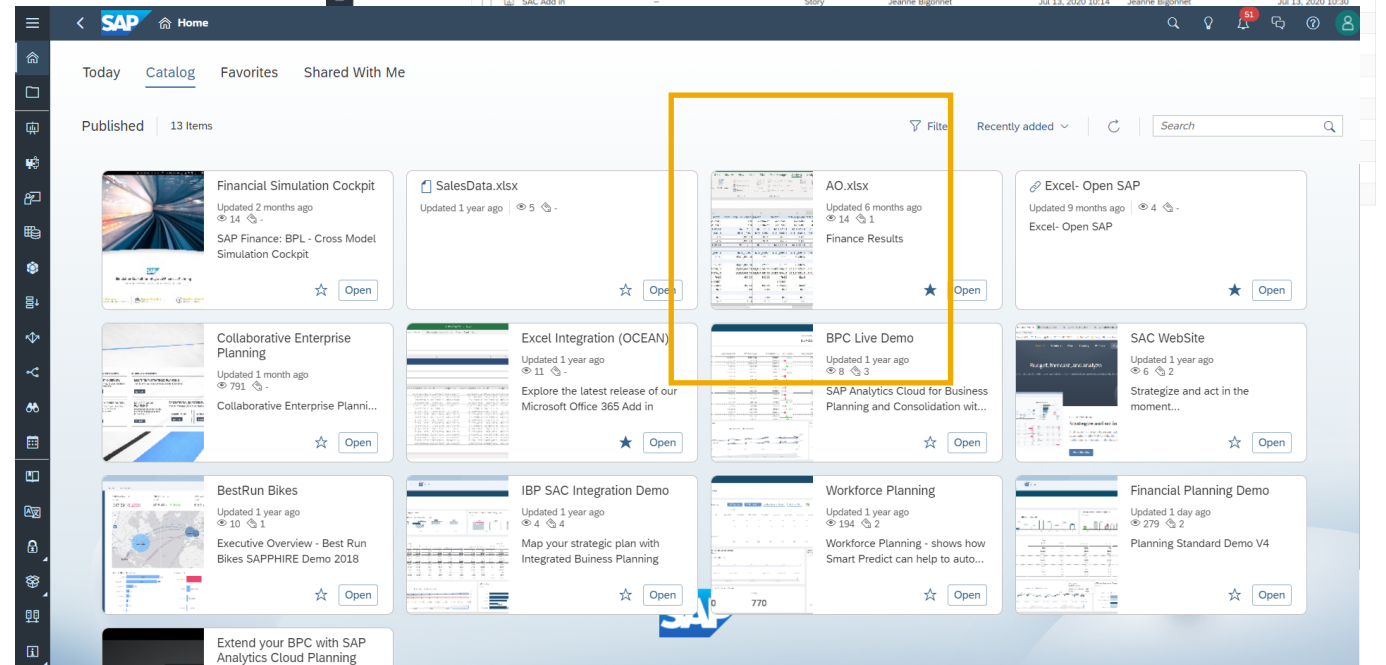
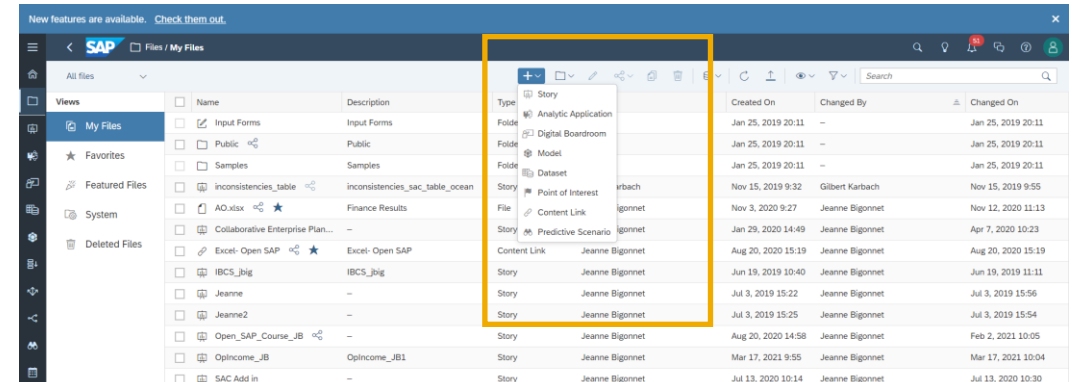
There is no specific action to take. Only deinstall the former version in use and reinstall AO, **Edition for SAP Analytics Cloud**.

Focus on Workbook storage:

There is no Workbook storage capabilities in SAP Analytics Cloud .

Use instead:

- Content “ Link option” In SAP Analytics Cloud File Repository menu to link to the workbook
- Hyperlink in SAP Analytics Cloud Catalog
- Share Point or any shared drive



AO on DWC AO2.8SP14 (May 30)

	SAP Analysis for Office (AO) Standard Edition	SAP Analysis for Office (AO) for SAC
	Included with license for BusinessObjects (named users)	SAC Subscription
Analysis – Direct DWC	✓	✓
Analysis – Workbook storage capability (BIIP, BW, local storage only) on DWC	⊘	⊘
Analysis – PowerPoint integration	⊘	⊘
Analysis – Scheduling (reason: no connection available to DWC in BIIP)	⊘	⊘

All AO feature on top of Hana features are supported -

[See note 2038663](#) : No commenting , no planning, no hierarchies on fly, shared axis sharing

⊘ not planned

SAP Analysis for Microsoft Office Road Map

H1/2022

Continuous improvements

- Data warehouse Cloud support

H2/2022

Continuous improvements

- Support SAP S/4HANA Cloud
- *File repo (if planned)*

Future Direction

Continuous improvements

- Replace systems

2 complementary add-ins for Microsoft Office

Statement of direction

A Cloud based edition, delivered through Microsoft Store



SAP Analytics Cloud, add-in for Microsoft Office

A Desktop edition, delivered by SAP



SAP Analysis for Microsoft Office

SAP Analytics Cloud add-in for Microsoft Office, our strategic go-to-frontend, will receive most enhancements for an Excel environment connecting to SAP Cloud sources* as **SAP Analytics Cloud** and **SAP Data Warehouse Cloud**.

It is available for both Microsoft Office 365 **Cloud and Desktop** versions.

SAP Analysis for Office continues to be an important add-in for customers requiring access to multiple data sources like BW, BPC, S/4, ... It can be also used with **SAP Analytics Cloud** with limitations** and **SAP Data Warehouse Cloud**.

Due to the different technologies, no migration path is provided between the two solutions.

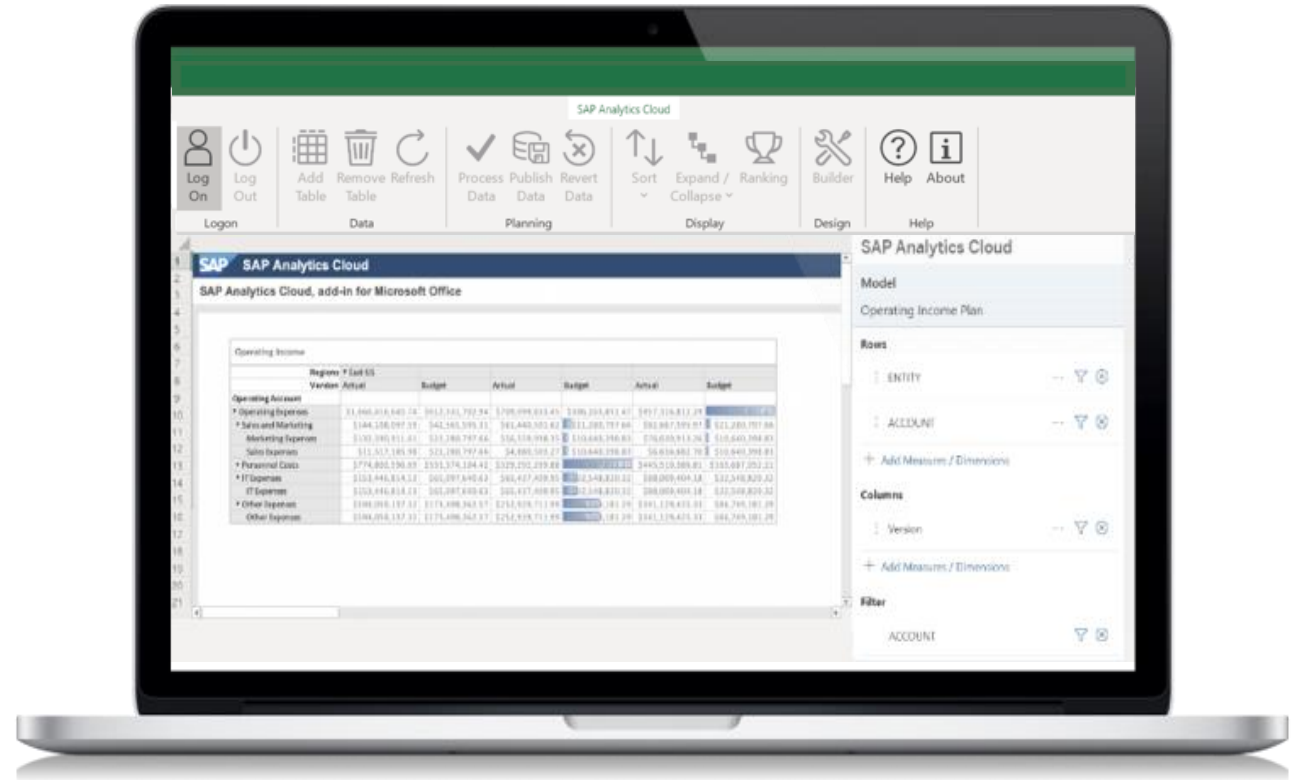
* See [Road map](#) for planned additional sources

**See [Note](#)

SAP Analytics Cloud, add-in for Microsoft Office

Introducing SAP Analytics Cloud, add-in for Microsoft Office

- **DEDICATED TO SAP ANALYTICS CLOUD**
Analyze, Share or Plan against SAC native models and live DWC data sets
- **WORK ANYWHERE**
Office 365 online or desktop on any device: at work, home, on the road
- **AVAILABLE THROUGH MICROSOFT STORE**
Allows access to SAC and DWC data in Microsoft Excel with no installation, no maintenance pain



Roadmap for SAP Analytics Cloud, add-in for MS Office

Product Plan			
Q1 2022	Q2 2022	Q3 2022	Future Direction
SAP Analytics Cloud, add-in for MS Office			
<p>Planning</p> <ul style="list-style-type: none"> Member selector – Filter leaves <p>Business Intelligence</p> <ul style="list-style-type: none"> Prompt support for SAC Model (Currency Variable Support) Formula based filter components Single Table refresh 	<p>Business Intelligence:</p> <ul style="list-style-type: none"> Custom functions: Cell-based data retrieval (GetData) Prompts (DWC & member selector) Add new columns/rows to table Number Formatting <p>User Experience</p> <ul style="list-style-type: none"> Support Copy & Paste Table definition <p>Data Sources / Platforms</p> <ul style="list-style-type: none"> NEO support Tenant repointing 	<p>Planning</p> <ul style="list-style-type: none"> Execute Data Actions New member selector filtering capability to define valid tuples for data entry <p>Business Intelligence</p> <ul style="list-style-type: none"> Dynamic formulas (new lines) Custom Measure Sorting <p>User Experience</p> <ul style="list-style-type: none"> Multiple table on one sheet Check Overwriting Off- grid formula <p>Data Sources / Platforms</p> <ul style="list-style-type: none"> S/4HANA Cloud (as live data source) 	<p>Planning</p> <ul style="list-style-type: none"> Commenting Add Member Fluid Data Entry Upload planning data from file Calendar integration <p>Business Intelligence</p> <ul style="list-style-type: none"> Undo / Redo Seamless integration from SAP Analytics Cloud story <p>Data Sources / Platforms</p> <ul style="list-style-type: none"> Other live connections: BW live, SAP HANA Cloud

[Link to Roadmap Explorer](#)

SAP Analytics Cloud, add-in for Microsoft Office

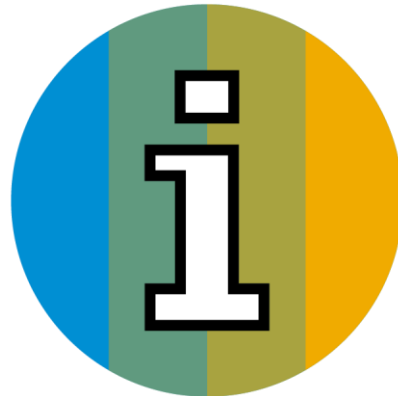
Key links for more information for customers and partners

SAP Analytics Cloud add in for MS office – Community page & blogs & FAQ – Click [HERE](#)

SAP Analytics Cloud add in for MS office – Road Map – Click [HERE](#)

SAP Analytics Cloud add in for MS office –Deploying the add-in – Click [HERE](#)

SAP Analytics Cloud add in for MS office – See it in action! – Click [HERE](#)



Related APOS Solutions



Solutions for Analysis Office

BEx Broadcast Replacement



APOS Solutions for Analysis for Office



Report Publishing

High Volume Scheduling

Report Management



APOS Solutions for Analysis for Office



Report Publishing

- **Bursting / Broadcasting**
- **Report Consolidation**
- **Distribution**



Analysis Office - Report Publishing



Report Bursting / Broadcasting

- Expand SAP BusinessObjects for generation of recipient-specific Analysis Office reports
- Data-driven, rules-driven and security-driven process
- Customized content which respects information consumer data permissions
- Dynamically slice information using prompts and filters
- Dynamic lists generated using values directly from security/permissions data

Report Consolidation

- Build a package of reports for individual information consumers
 - receive a single consolidated report rather than a series of disconnected reports
- Blending of Analysis Office content with other BI content types

Distribution

- Expanded Destinations
 - Email (attachment, body) Printer, Network file location, FTP/FTPS
- Expanded Formats
 - PDF, CSV, XLS, HTML, TXT, XML, OXML, XPS, ODS

APOS Solutions for Analysis for Office



High Volume Scheduling

- Bulk Management of Schedules
- Intuitive and Flexible
- Reusable and Repeatable



Analysis Office – High Volume Scheduling



Powerful, Highly Intuitive ‘Manual’ Scheduling

- Schedule AO documents in bulk and manage within familiar, easy-to-use Excel interface
- Manage and update report parameters and filters
- Scan across folders for AO instances and schedules to build bulk scheduling lists
- Save scheduling spreadsheets for future modification and reuse

1	Error Message	Include	ID	Report S
2				
3				
4				
5				
6				
7				
8				
9				
10				
11				
12				
13				
14				
15				
16				
17				
18				
19				
20				
21				
22				
23				

Analysis Office – High Volume Scheduling



Powerful, Highly Intuitive ‘Manual’ Scheduling

- Schedule AO documents in bulk and manage within familiar, easy-to-use Excel interface
- Manage and update report parameters and filters
- Scan across folders for AO instances and schedules to build bulk scheduling lists
- Save scheduling spreadsheets for future modification and reuse

The screenshot shows the APOS InfoScheduler Excel interface. The ribbon includes tabs for File, Home, APOS InfoScheduler, Insert, Page Layout, Formulas, Data, Review, View, Developer, Analysis, EPM, and Data Manager. The APOS InfoScheduler tab is active, showing options like Login, Logout, Schedule, Schedule with Tracking, Track, Set Distribution Server Inbox, Manage Cached LoVs, Object Search, Email Addresses, Check New Parameters, Clear Folder Cache, Export XML, Import XML, and Manage Profiles. Below the ribbon is a spreadsheet with columns A through CF. The data is as follows:

	A	B	C	D	CB	CC	CD	CE	CF
1	Error Message	Include	ID	Report Source Name	P1 Name	P1 Value	P2 Name	P2 Value	P3 Name
2		0	3777546	/APOS Sales Reports/2_Prompts_Colour_And_Class	"DS_1 PRODUCTCLASS"	"M"	"DS_1 PRODUCTCOLOR"	"Blue"	
3		0	3777552	/APOS Sales Reports/2_Prompts_Colour_And_Class	"DS_1 PRODUCTCLASS"	"H"	"DS_1 PRODUCTCOLOR"	"Red;Blue"	
4		0	3777552	/APOS Sales Reports/2_Prompts_Colour_And_Class	"DS_1 PRODUCTCLASS"	"H"	"DS_1 PRODUCTCOLOR"	"Red;Blue"	
5		0	3777552	/APOS Sales Reports/2_Prompts_Colour_And_Class	"DS_1 PRODUCTCLASS"	"H"	"DS_1 PRODUCTCOLOR"	"Red;Blue"	
6		0	3777552	/APOS Sales Reports/2_Prompts_Colour_And_Class	"DS_1 PRODUCTCLASS"	"H"	"DS_1 PRODUCTCOLOR"	"Red;Blue"	
7		0	3777552	/APOS Sales Reports/2_Prompts_Colour_And_Class	"DS_1 PRODUCTCLASS"	"H"	"DS_1 PRODUCTCOLOR"	"Red;Blue"	
8		0	3777552	/APOS Sales Reports/2_Prompts_Colour_And_Class	"DS_1 PRODUCTCLASS"	"H"	"DS_1 PRODUCTCOLOR"	"Red;Blue"	
9		0	3777552	/APOS Sales Reports/2_Prompts_Colour_And_Class	"DS_1 PRODUCTCLASS"	"H"	"DS_1 PRODUCTCOLOR"	"Red;Blue"	
10		0	3777552	/APOS Sales Reports/2_Prompts_Colour_And_Class	"DS_1 PRODUCTCLASS"	"H"	"DS_1 PRODUCTCOLOR"	"Red;Blue"	

Analysis Office – High Volume Scheduling



Powerful, Highly Intuitive 'Manual' Scheduling

- Schedule AO documents in bulk and manage within familiar, easy-to-use Excel interface
- Manage and update report parameters and filters
- Scan across folders for AO instances and schedules to build bulk scheduling lists
- Save scheduling spreadsheets for future modification and reuse

	A	B	C	D	CB	CC	CD	CE	
1	Error Message	Include	ID	Report Source Name	P1 Name	P1 Value	P2 Name	P2 Value	3 M
2		0	3777546	/APOS Sales Reports/2_Prompts_Colour_And_Class	"DS_1 PRODUCTCLASS"	"M"	"DS_1 PRODUCTCOLOR"	"Blue"	
3		0	3777552	/APOS Sales Reports/2_Prompts_Colour_And_Class	"DS_1 PRODUCTCLASS"	"H"	"DS_1 PRODUCTCOLOR"	"Red;Blue"	
4		0	3777552	/APOS Sales Reports/2_Prompts_Colour_And_Class	"DS_1 PRODUCTCLASS"	"H"	"DS_1 PRODUCTCOLOR"	"Red;Blue;Black"	
5		0	3777552	/APOS Sales Reports/2_Prompts_Colour_And_Class	"DS_1 PRODUCTCLASS"	"H"	"DS_1 PRODUCTCOLOR"	"Red;Blue"	
6		0	3777552	/APOS Sales Reports/2_Prompts_Colour_And_Class	"DS_1 PRODUCTCLASS"	"H"	"DS_1 PRODUCTCOLOR"	"Red"	
7		0	3777552	/APOS Sales Reports/2_Prompts_Colour_And_Class	"DS_1 PRODUCTCLASS"	"H"	"DS_1 PRODUCTCOLOR"	"Black"	
8		0	3777552	/APOS Sales Reports/2_Prompts_Colour_And_Class	"DS_1 PRODUCTCLASS"	"H"	"DS_1 PRODUCTCOLOR"	"Red;Blue;Green"	
9		0	3777552	/APOS Sales Reports/2_Prompts_Colour_And_Class	"DS_1 PRODUCTCLASS"	"H"	"DS_1 PRODUCTCOLOR"	"Green;Blue"	
10		0	3777552	/APOS Sales Reports/2_Prompts_Colour_And_Class	"DS_1 PRODUCTCLASS"	"H"	"DS_1 PRODUCTCOLOR"	"Black;Green"	

APOS Solutions for Analysis for Office



Report Management

- Instance Management
- Document Archive and Backup
- Document Impact Analysis
- Automated Report Testing



Analysis Office - Report Management



Instance Management

- Managing AO instances with bulk operations
- Rapid response to failed AO schedules
- Bulk re-scheduling and editing of AO schedules

Document Archive/Backup

- AO report recovery
- Long term AO document archival needs

Document Impact Analysis

- Clarity on what data is utilized in AO reports
- Database changes result in AO report challenges
- Identify preventive action needed

Automated Report Testing

- Regression testing of AO reports
- Validation of AO reports between systems
- Validation of AO reports after migration

APOS Solutions for SAP BusinessObjects



APOS Insight

BI System Auditing

- System Inventory
- Security Analysis
- System Usage Analysis
- Report Impact Analysis

BI Report Testing

- Automated Report Testing
- Regression Testing
- Validation of Report Data
- Report Performance Testing

BI System Monitoring

- Advanced System Monitoring
- Operating Environment Monitoring
- Database Monitoring
- Process Monitoring

BI Query Surveillance

- Real-time BI Query Monitoring
- Query Performance Alerting & Auditing
- Query Intervention; Remote Cancelling
- Sensitive Data Audit



APOS Administrator

Object Management

- Bulk Security Management
- Bulk Settings Management
- System Objects Promotion
- Connections Maintenance

Schedule Management

- High-volume schedule management
- Multiple schedule properties editing
- Grid scheduling interface
- Repeatable scheduling templates

Instance Management

- Manage entire instance inventory
- Granular instance search
- Stop, pause, release, reschedule
- Rapid recovery to failed schedules

Web Intelligence Migration

- Bulk conversion of Universes from UNV to UNX
- High-Volume Repoint Web Intelligence reports
- Success validation
- Controlled, project-based workflow

APOS Storage Center



- System Backup
- Content Archiving
- Content Versioning
- Selective Restoration
- Automated System Clean Up

APOS Publisher

- Systematic Content Delivery
- Advanced Document Bursting
- Enhanced Content Distribution
- Security and Encryption
- Statement Generation



APOS Publisher for SAP Analytics Cloud



BEx Broadcast Replacement

- Dynamic Broadcast Rules
- Formats
- Destinations



APOS Publisher for Cloud



BEx Broadcast Workflow Replacement

Report Bursting / Broadcasting

- Expand SAP Analytics Cloud for generation of recipient-specific SAC Stories/reports
- Data-driven, rules-driven and security-driven process to generate personalized reports
- Customized content which respects recipient data permissions
- Dynamically slice information using filters and variables
- Dynamic lists generated using values directly from security/permissions data

Formats

- Expanded output format options: **Excel, PPT, PDF, + more**

Destinations

- Expanded distribution location options: **Email** (attachment, body), **Network file location, FTP**

Report Consolidation

- Federate content from multiple SAC reports into a single document/spreadsheet

Customer Success

BEx Broadcaster Workflow Replacement

A global agricultural science and technology company uses Publisher for Cloud to fulfill a number of stakeholder reporting requirements that were previously addressed with BEx reports and BEx Broadcaster.

- Formats
- Targeted Distribution
- Printing
- Dynamic Formatting
- On-Demand Bursting

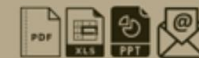


CHALLENGE: REPLACING BEX BROADCASTER IN AN SAP BW/4HANA ENVIRONMENT

A leading, highly diversified, agricultural sciences manufacturer has been using BEx Broadcaster with SAP BW to keep its large network of customers, partners and resellers informed. The company planned to move their SAP BW deployment to SAP BW/4HANA, and needed to replicate BEx broadcasting capabilities on the new platform.



Requirements: High-Volume, Targeted Distribution & Multiple Formats



FORMATS



They needed to broadcast multiple formats such as Excel and PDF, and to be able to include multiple formats per email.

DYNAMIC FORMATTING

They needed a large number of columns to fit within a landscape-mode PDF, and include color coding to emphasize key KPIs. Requirements also included a dataset that would vary in the number of rows being distributed, and formatting needed to adjust accordingly dynamically, with accurate pagination.



TARGETED DISTRIBUTION

APOS Solutions for SAP Analytics Cloud



APOS Live Data Gateway

- High-performance live data connectivity
- Virtualized, governed, self-service connectivity
- Connect to Relational databases
- Connect to OLAP data sources
- Connect to Cloud data environments
- Connect to SAP Application data

APOS Publisher for Cloud

- Automate secure information delivery
- Deliver timely information
- Create a flexible messaging environment
- Simplify administration
- Use multiple formats & destinations
- Burst stories with multiple filters
- Burst conditionally
- Collate stories
- Personalize PowerPoint bursting



APOS Insight for Cloud

Monitor – tracking & alerting for:

- SAC story performance
- System response measures

Validation automated comparisons across SAC versions of:

- SAC story data
- SAC story performance
- SAC story structure

Impact analysis – granular auditing of SAC story structure metadata

APOS Semantic Layer Migration

- Capture SAP BI Universe data connection and data modelling logic
- Project-based, wizard-driven interface
- Scan your SAP BI content for relevant data connections
- Harmonize SAP BI and HANA data modelling throughout Hybrid BI
- Translate SAP BusinessObjects modelling to SAP HANA Calculation Views
- Translate SAP BusinessObjects modelling to a unified semantic layer



Questions?





Upcoming Events



Impact Analysis for SAP BusinessObjects Flashes of Insight – Webinar

June 18th , 2022 - 11am EDT

Impact analysis is a critical need for BI teams as BI systems and system content evolve rapidly. As data structure changes are being planned or implemented, it is important to know what BI content will be or has been affected by those changes. This is a common concern that creates challenges whenever database or semantic layer changes are made. These may be internally driven changes, or may result from externally driven changes in a third-party application (healthcare EHR systems, for example). Such data source changes can also affect financial reporting internal controls.

Join us June 16 for a live webinar, focusing on measuring, analyzing and managing the impact on reports, universes, and dashboards.

You will learn how to:

- Foresee and measure the impact of any data source changes with detailed metadata to record system content changes
- Which reports and universes will be affected by database schema changes?
- Which reports will be affected by modification of objects in universes
- Foresee and measure the impact of environmental changes
- Use impact analysis to achieve regulatory/internal control compliance and to accelerate EHR upgrades

... and more



Register at www.apos.com

STAY CONNECTED



LINKEDIN

APOS Systems Inc.



TWITTER

@APOS_Systems

Interested in learning more about SAP Analytics Cloud and Sharing your experience?

JOIN THE SAP ANALYTICS CLOUD GROUP TODAY!



Join easily by searching "SAP Analytics Cloud (SAC)" & Request to Join on
LinkedIn!

QUESTIONS?

Please enter your questions in the Q&A panel.



Thank You!

Get in Touch

WEBSITE

www.apos.com

EMAIL ADDRESS

info@apos.com

PHONE NUMBER

(+1) 519 894 2767

