



APOS

A background network diagram consisting of numerous light blue human icons connected by thin white lines, forming a complex web of connections. The icons are scattered across the dark blue background, with some appearing more prominent than others.

This webinar will begin at 10:00 am EDT (New York) / 4pm CEST (Paris)

Presented by:

Allan Pym, APOS
Jeanne Bigonnet, SAP
Alan Golding, APOS

This webinar includes audio, please ensure that your computer speakers are turned on.
Your audio connection will be on mute and will be silent until the webinar begins.

WEBINAR

New Analysis for Office Scheduling & Broadcasting + SAP Office Integration Update



Today's Session – Key Topics

Microsoft Office Integration Update

- SAP Analysis for Office and SAP Analytics Cloud Add-in for Microsoft Excel
- Latest deliveries and road map for SAP Analytics Cloud Add-in for Microsoft Excel
- SAP Analytics Cloud Add-in for Microsoft PowerPoint GA

Scheduling & Broadcasting Analysis for Office Reports

- Advancing analytics
- Publisher for Cloud Overview
- Scheduling & broadcasting of SAC-deployed Analysis for Office reports
- Automation, formats, destinations, advanced features

Q&A – see webinar console



HOUSEKEEPING



You will have access to the **slides** via email



You will get the **recording** within 24 hours



Download the **handouts** in the panel



Tell us how we did in the **survey**



EXTEND
SAP ANALYTICS

Who is APOS?

- Formed in 1992
- Enabling BI platform management, administration, migration, governance and compliance
- Simplifying, automating, extending SAP Analytics Cloud, SAP BusinessObjects, and SAP data analytics
- Strategic SDK development and consulting
- Hundreds of customers globally





EXTEND
SAP ANALYTICS

APOS Solutions for SAP BusinessObjects



APOS Insight

BI System Auditing

- System Inventory
- Security Analysis
- System Usage Analysis
- Report Impact Analysis

BI Report Testing

- Automated Report Testing
- Regression Testing
- Validation of Report Data
- Report Performance Testing

BI System Monitoring

- Advanced System Monitoring
- Operating Environment Monitoring
- Database Monitoring
- Process Monitoring

BI Query Surveillance

- Real-time BI Query Monitoring
- Query Performance Alerting & Auditing
- Query Intervention; Remote Cancelling
- Sensitive Data Audit



APOS Administrator

Object Management

- Bulk Security Management
- Bulk Settings Management
- System Objects Promotion
- Connections Maintenance

Schedule Management

- High-volume schedule management
- Multiple schedule properties editing
- Grid scheduling interface
- Repeatable scheduling templates

Instance Management

- Manage entire instance inventory
- Granular instance search
- Stop, pause, release, reschedule
- Rapid recovery to failed schedules

APOS Storage Center



- System Backup
- Content Archiving
- Content Versioning
- Selective Restoration
- Automated System Clean Up

APOS Publisher



- Systematic Content Delivery
- Advanced Document Bursting
- Enhanced Content Distribution
- Security and Encryption
- Statement Generation

APOS Web Intelligence Migrator



- Bulk conversion of Universes from UNV to UNX
- High-Volume Repoint Web Intelligence reports
- Success validation
- Controlled, project-based workflow

APOS Solutions for SAP Analytics Cloud



APOS Publisher for Cloud

- Automated broadcasting and distribution of personalized SAC reports to target user groups
- Distribute reports to the right people, right time, right location, right format
- Analysis for Office broadcasting and scheduling



APOS Data Gateway

- Live connectivity from SAC to wide range of data sources
- Import data from wide range of sources into SAC
- Extract and Export data from SAC



JEANNE BIGONNET

Product Manager, Analytics

SAP

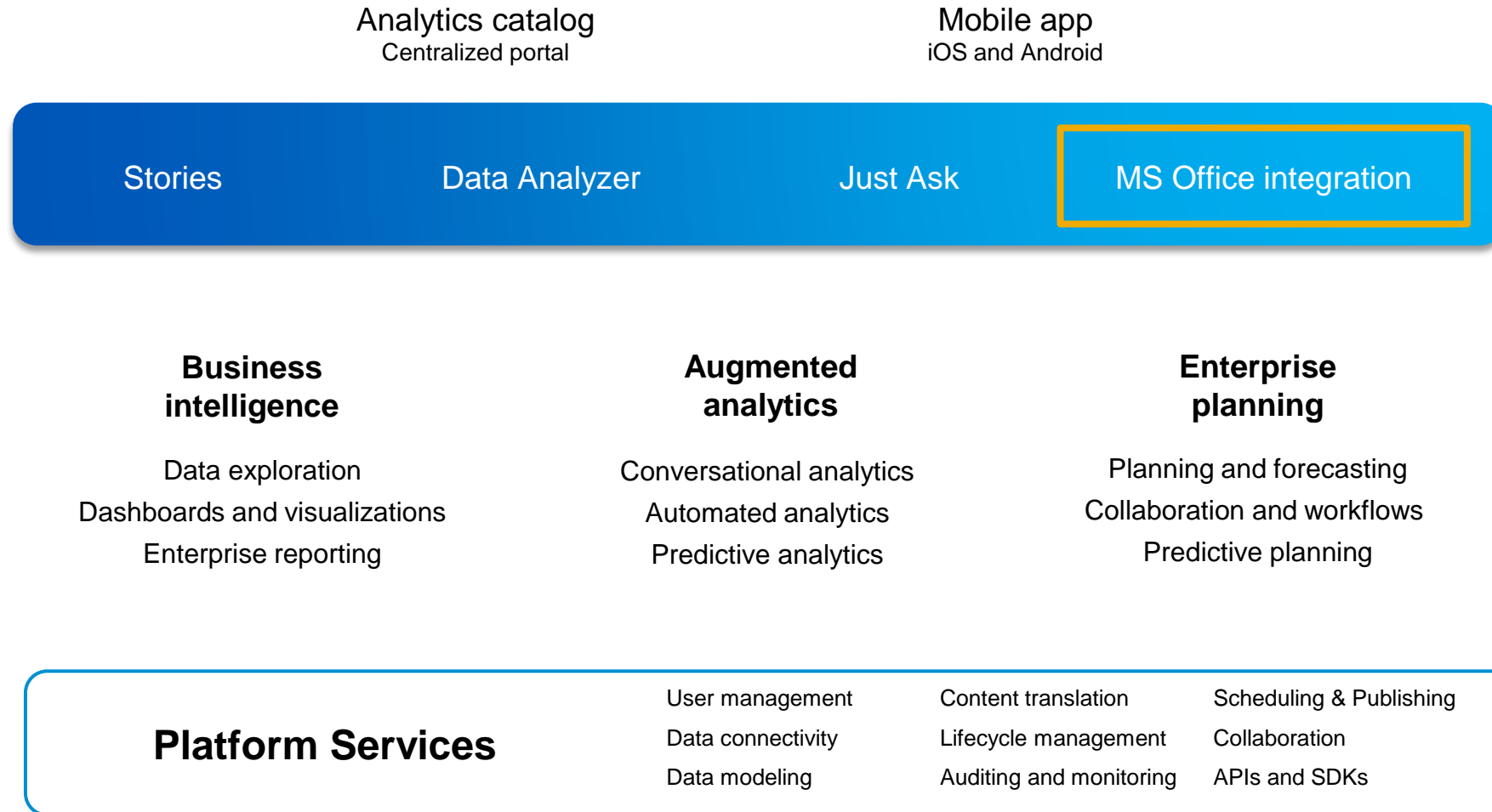
SAP ANALYTICS CLOUD

MS Office integration

Public

Deliver data-to-value end-to-end instead of point solutions

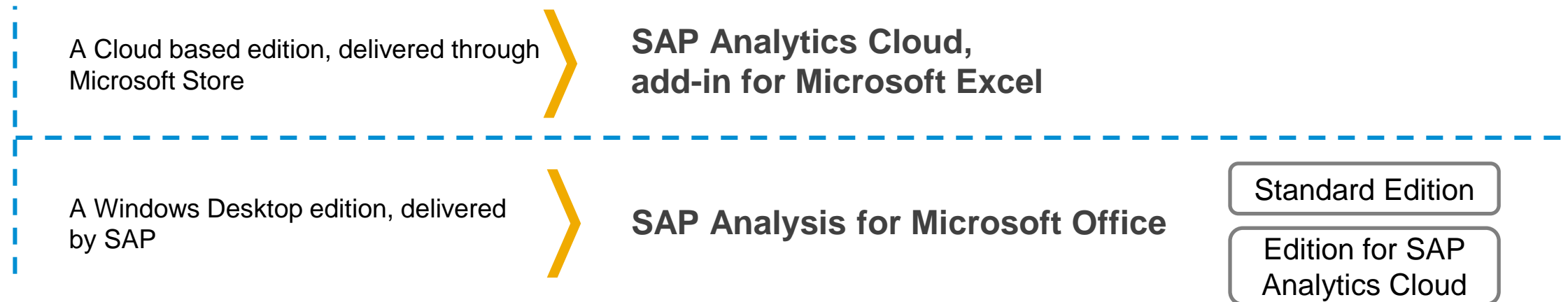
SAP Analytics Cloud



SAP Analysis for Microsoft Office

Statement of direction

2 complementary add-ins for Microsoft Excel



SAP Analysis for Microsoft Office (also known as AFO)

continues to be an important add-in for multiple data sources like SAP BW, HANA, BPC, S/4 and Group Reporting. It is designed for financial analysts who require analytical capabilities in Microsoft Excel. It can also be used with SAP Analytics Cloud and SAP Datasphere connectivity (Analytical Dataset only).

However, all feature investments are being made exclusively in in **SAP Analytics Cloud, add-in for Microsoft Excel**, which is our strategic solution, built on top of Microsoft Office 365. Roadmap can be found [here](#).

SAP Analytics Cloud Add-In For Microsoft Office XLS

- **DEDICATED TO SAP ANALYTICS CLOUD**

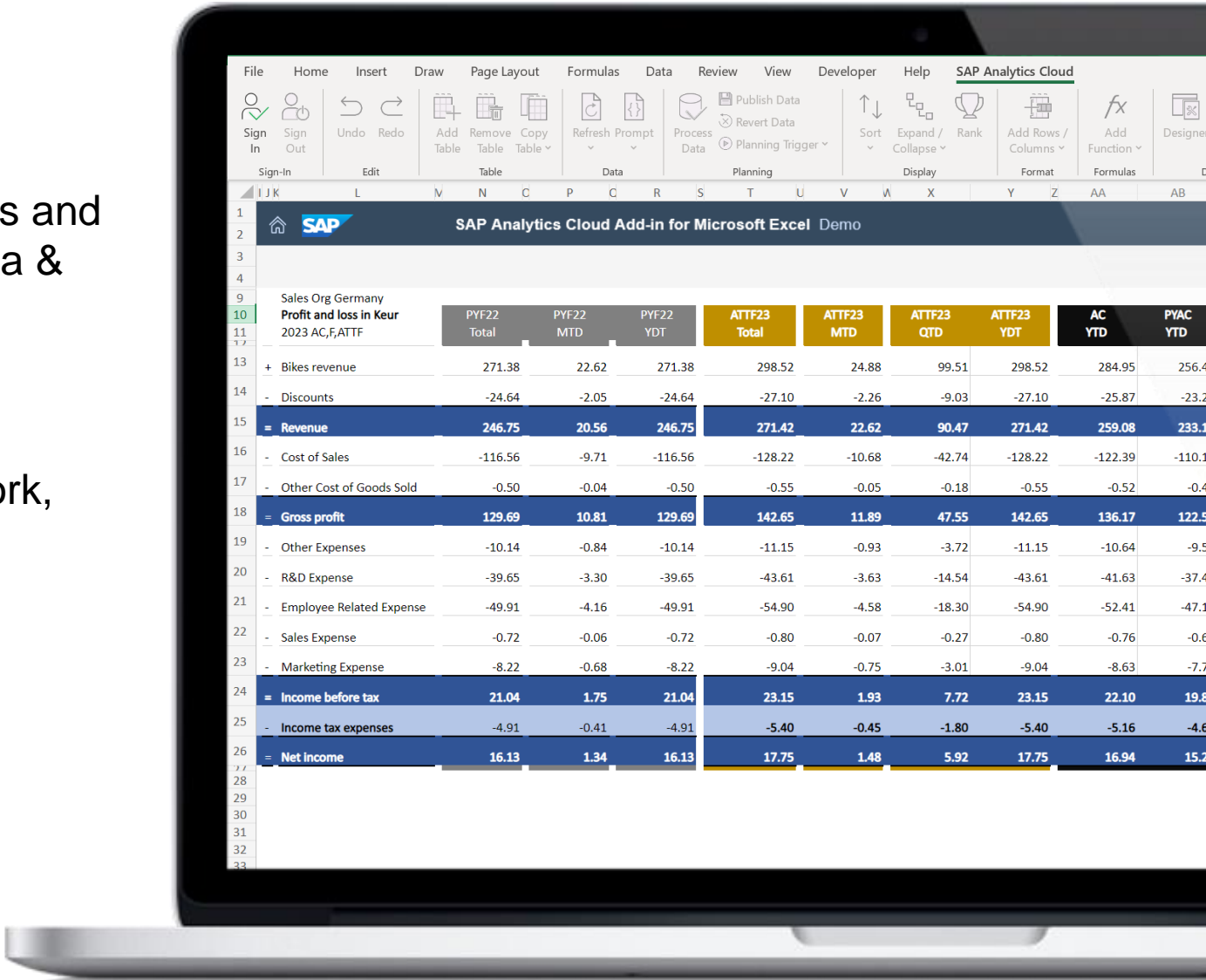
Analyze, Share or Plan against SAC native models and offers Analytical capabilities on top of live S/4 Hana & BW or SAP Datasphere**

- **WORK ANYWHERE**

Office 365* online or desktop on any device: at work, home, on the road

- **AVAILABLE THROUGH MICROSOFT STORE**

Allows access to SAC in Microsoft Excel with no installation, no maintenance pain



*Office 2021 is also supported

**More live sources—See [Road Map Explorer](#)

SAP Analytics Cloud Add-In For Microsoft Office XLS

Recent deliveries

- Support for Live SAP Business Warehouse (SAP BW/Tunnel) and SAP HANA Cloud in Microsoft Excel
- Member Selector improvements: range
- Conditional formatting
- Repository / catalog integration

	Measures	OBC_ORDN	OBC_ORDN	OBC_ORDW	OBC_ORDW	OBC_TURN	OBC_TURN	OBC_DATE2	OBC_DATE2	OBC_DATE3	OBC_DATE3	OBC_COUNT	OBC_COUNT
8	OBC_BUY1_OBC_HOME												
9	Totals		1,560		KG2,993.490		EUR29,462.82		38,352		37,987		541
10	Altenburg		17		KG19.020		EUR343.58		38,294		38,022		6
11	Ansbach		18		KG37.470		EUR408.73		38,348		38,032		6
12	Arnstadt		11		KG13.480		EUR172.71		38,337		38,059		5
13	Bad Windsheim		28		KG63.530		EUR714.26		38,346		38,063		10
14	Bamberg		6		KG11.180		EUR185.34		38,276		38,015		3
15	Bayreuth		32		KG64.310		EUR584.03		38,341		38,001		11
16	Bernburg		12		KG16.390		EUR197.14		38,292		38,097		3
17	Bopfingen		12		KG20.670		EUR204.18		38,290		37,991		4
18	Cham		6		KG15.150		EUR165.65		38,300		38,012		3
19	Coburg		27		KG52.730		EUR395.25		38,306		38,024		9
20	Dachau		6		KG4.330		EUR109.25		38,203		38,129		2
21	Erfurt		29		KG45.930		EUR306.97		38,352		38,020		8
22	Flensburg		19		KG36.670		EUR401.96		38,277		38,008		7
23	Friedrichshafen		24		KG40.910		EUR513.80		38,328		38,006		9
24	Garching		32		KG63.830		EUR497.90		38,348		38,004		10
25	Gera		25		KG52.770		EUR455.02		38,295		38,024		10
26	Gotha		32		KG47.010		EUR502.96		38,351		37,999		9
27	Grafring		22		KG49.070		EUR491.13		38,316		38,065		8
28	Halberstadt		57		KG122.260		EUR1,009.56		38,328		38,001		18
29	Haldensleben		8		KG24.310		EUR213.06		38,176		38,047		4
30	Halle		47		KG76.890		EUR673.74		38,351		37,987		15
31	Heilbronn		43		KG77.440		EUR887.98		38,349		37,991		14
32	Heiligenstadt		37		KG54.210		EUR717.81		38,326		38,010		14
33	Husum		18		KG39.220		EUR413.71		38,338		38,003		7
34	Jessen		21		KG42.100		EUR403.19		38,335		37,990		8
35	KAETZING		17		KG41.750		EUR342.12		38,311		37,992		6
36	Karlsruhe		15		KG34.190		EUR234.21		38,317		38,048		4

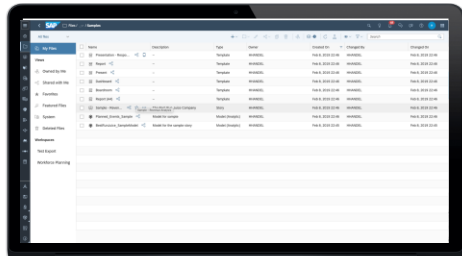
SAP Analytics Cloud Add-In For Microsoft Office XLS

Advanced Flexible reporting

Asymmetric reporting

2024
H2

With new custom function `SAP.ASYMMETRICFILTER` customers can build asymmetric reports; as example, “ a report showing Actual data for Q1 and only Forecast data for Q2 and Q3”.

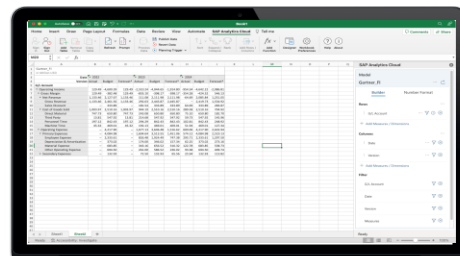


Planning

Add Comments

2024
H2

With commenting support, customers can insert/retrieve data point comments entered from the web or from Excel.

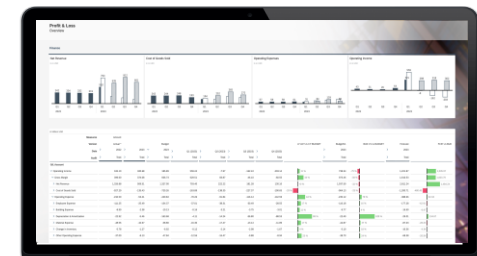


Story Integration

Jump -off from Story

2024
H2+

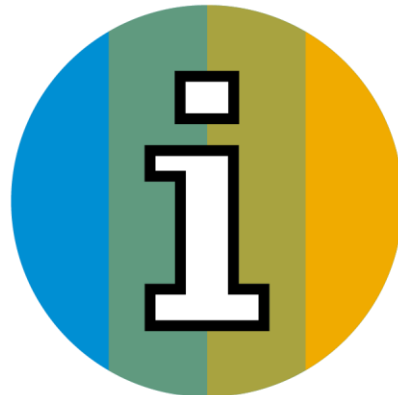
With story integration, customers can easily jump off from the web to Excel Workbooks without any re-design action needed.



SAP Analytics Cloud Add-In For Microsoft Office XLS

Key links for more information for customers and partners

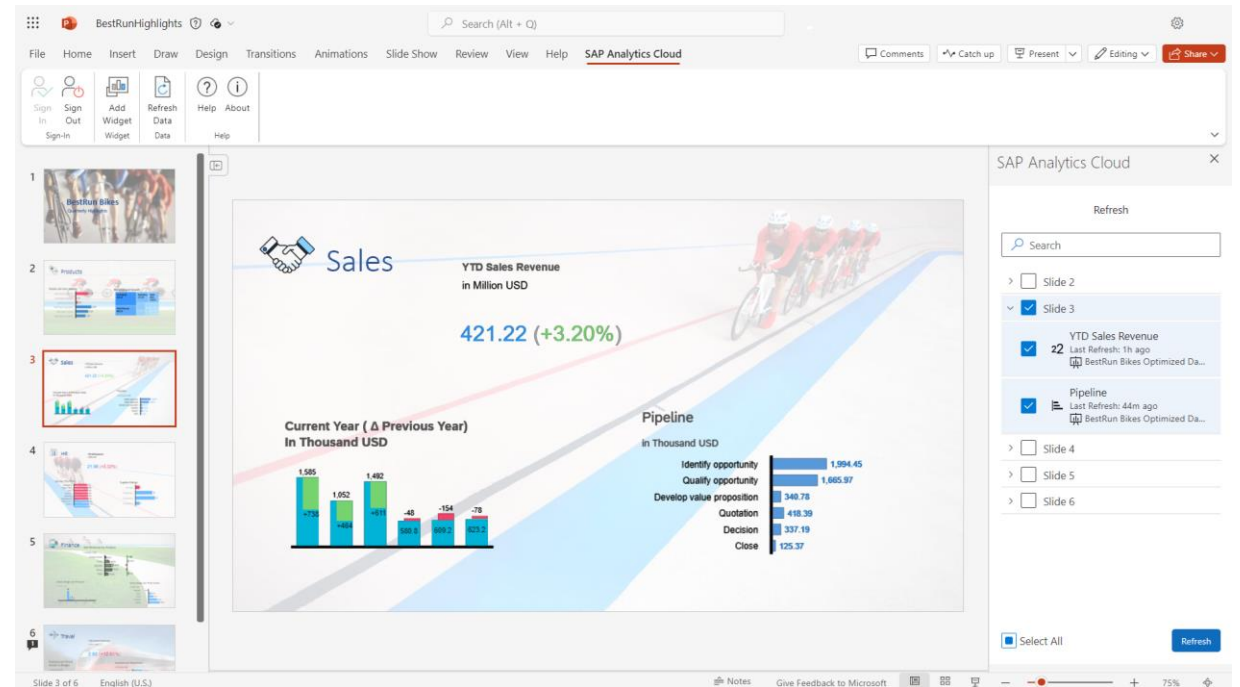
- [SAP Analytics Cloud add in for MS Excel – Community page & blogs & FAQ](#)
- [SAP Analytics Cloud add in for MS Excel – Road Map](#)
- [SAP Analytics Cloud add in for MS Excel –Deploying the add-in](#)
- [SAP Analytics Cloud add in for MS Excel – See it in action!](#)



SAP Analytics Cloud Add-In For Microsoft Office PPT

With SAP Analytics Cloud, add-in for Microsoft PowerPoint:

- Intuitively connect to an SAP Analytics Cloud tenant
- Readily find SAP Analytics Cloud stories and associated widgets
- Select a widget and filter its data, if necessary
- Add the widget to the slides
- Refresh the widget's data on demand

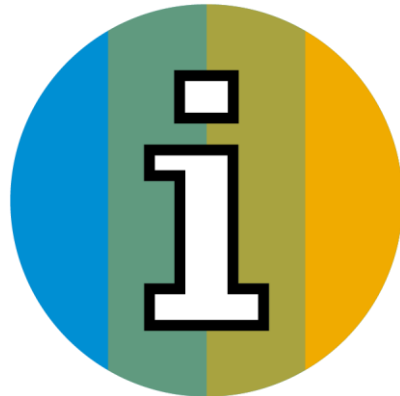


This ensures that your presentations always contain the most accurate and trusted data without the need to copy/paste the information from your SAP Analytics Cloud system again.

SAP Analytics Cloud add-in for Microsoft PPT

Key links for more information for customers and partners

- [Video](#)
- [Blog](#)
- [SAP Help](#)
- [Microsoft AppSource](#)
- [Road Map Explorer](#)



Questions

What do you hear from customers about the importance of scheduling and broadcasting of their Analysis for Office reports?

What specific challenges do you hear about from customers about their Analysis for Office scheduling and broadcasting needs?

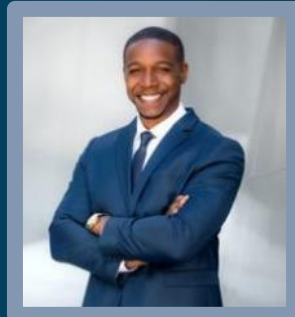
Scheduling & Broadcasting Analysis for Office Reports



Information Recipients



Finance
Teams



Executives



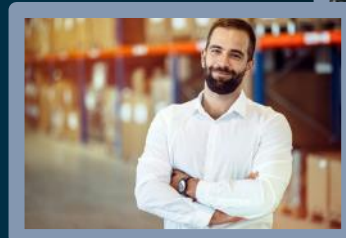
Suppliers



Sales
Teams



Customers



Store
Managers

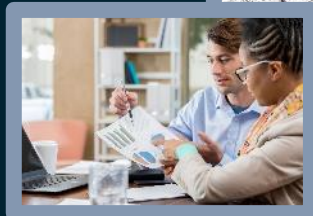
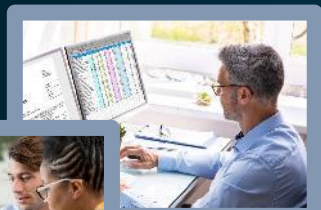
Executives



Customers



Finance
Teams



Sales
Teams



Suppliers



Store
Managers



Business
Objects



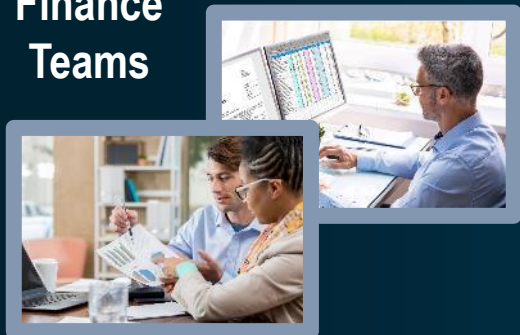
Executives



Customers



Finance
Teams



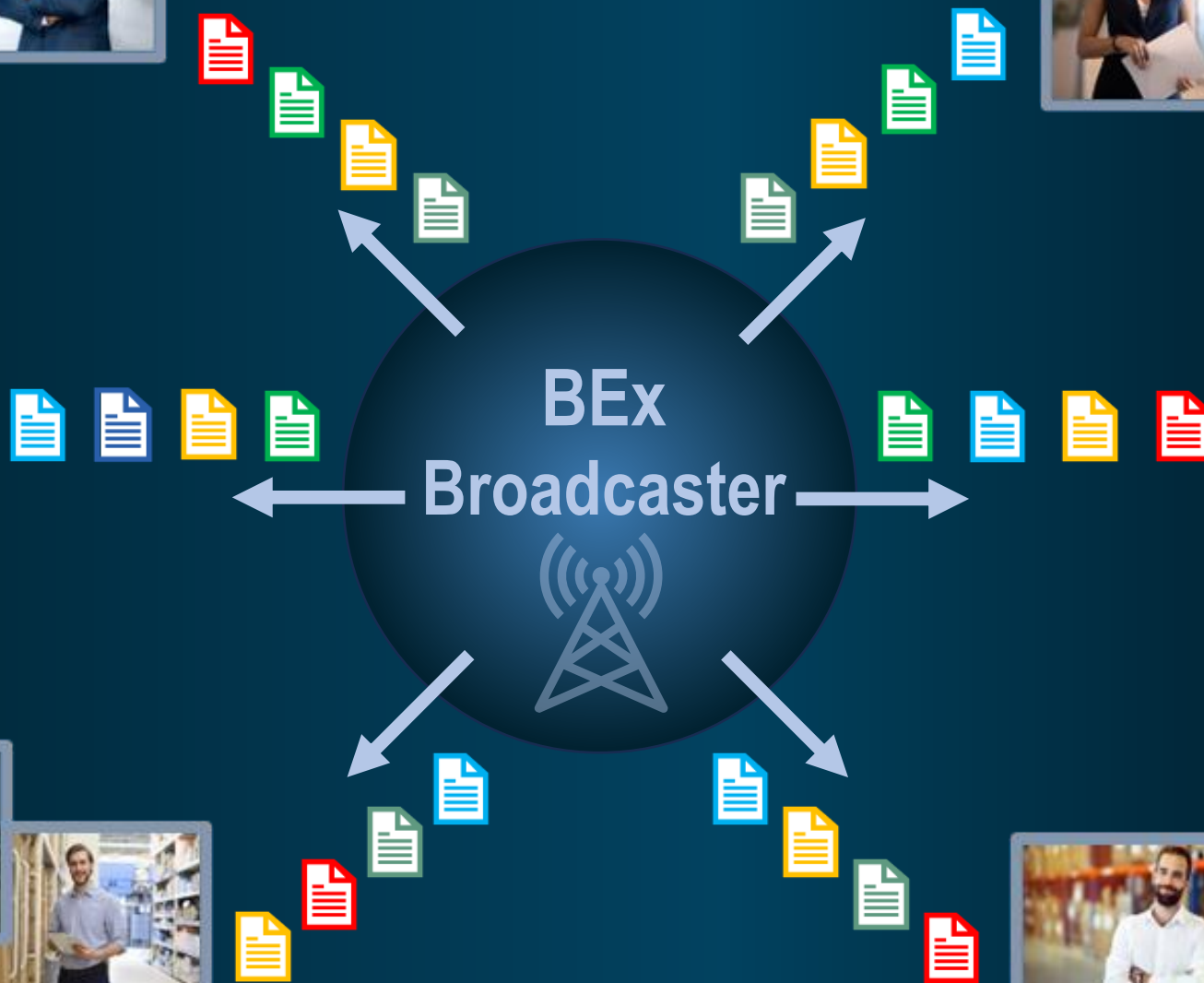
Sales
Teams



Suppliers



Store
Managers



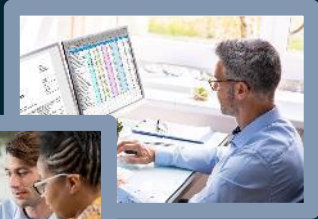
Executives



Customers



Finance Teams



Sales Teams



Suppliers





Store Managers



APOS Publisher for Cloud

SAP Analytics Portfolio comparison by use case

Business Intelligence										Planning	Augmented Analytics		
High Volume Publications	Operational Reporting	Ad Hoc Reporting	MS Office Integration	Analytic Applications	Mobile	Dashboards	Data Exploration	Data Discovery	Content Catalog	Enterprise Planning	Conversational Analytics	Automated Analytics	Predictive Analytics
(*)	 SAP Analytics Cloud												
 SAP BusinessObjects BI Suite													

(*) For high volume publication workflows in SAP Analytics Cloud, we recommend 3rd party solutions, e.g. <https://www.apos.com/content/apos-publisher-sap-analytics-cloud>

APOS Publisher for Cloud

Now Supports Analysis for Office!

APOS Publisher for Cloud is a software solution that automates the generation of tailored versions of report content from SAP Analytics Cloud (SAC), and then distributes that analytics content out to targeted users and locations.

The solution functions to broadcast personalized analytics to the right people, at the right time, and in the right format.

“Broadcasting”

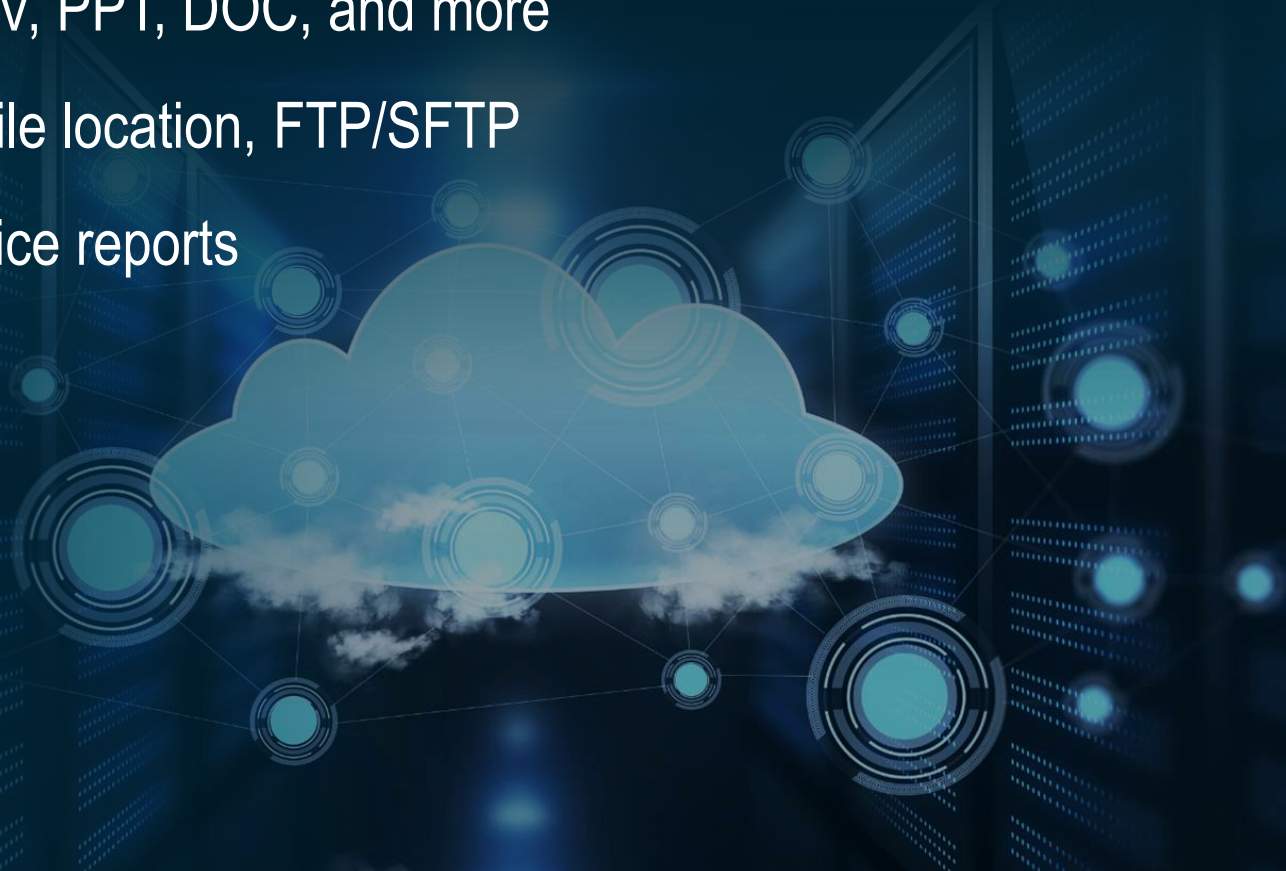


“Bursting”



High-Volume Publications of SAC Stories, SAC Applications, Analysis for Office Reports

- Automated, data-driven broadcasting of personalized SAC and Analysis for Office reports to a wide range of information consumers
- Broad content format support: PDF, XLS, CSV, PPT, DOC, and more
- Multiple destination support: email, network file location, FTP/SFTP
- Scheduled pre-processing of Analysis for Office reports



Alternative for SAP BusinessObjects Scheduling & Broadcasting Use Cases

- Remove barriers to SAP Analytics Cloud adoption
- Leverage SAC based reports/repository
- Shift Analysis for Office scheduling away from BusinessObjects
- Remove reliance on SAP BusinessObjects deployment

Modernize BEx Broadcaster Use Cases

- Adopt Analysis for Office or SAC reports to fulfill current BEx reports
- Remove reliance on legacy BW/BEx technologies
- Remove S/4HANA and Datasphere deployment obstacles
- Adopt SAC by leveraging Analysis for Office or SAC reports to fulfill current BEx Broadcaster jobs

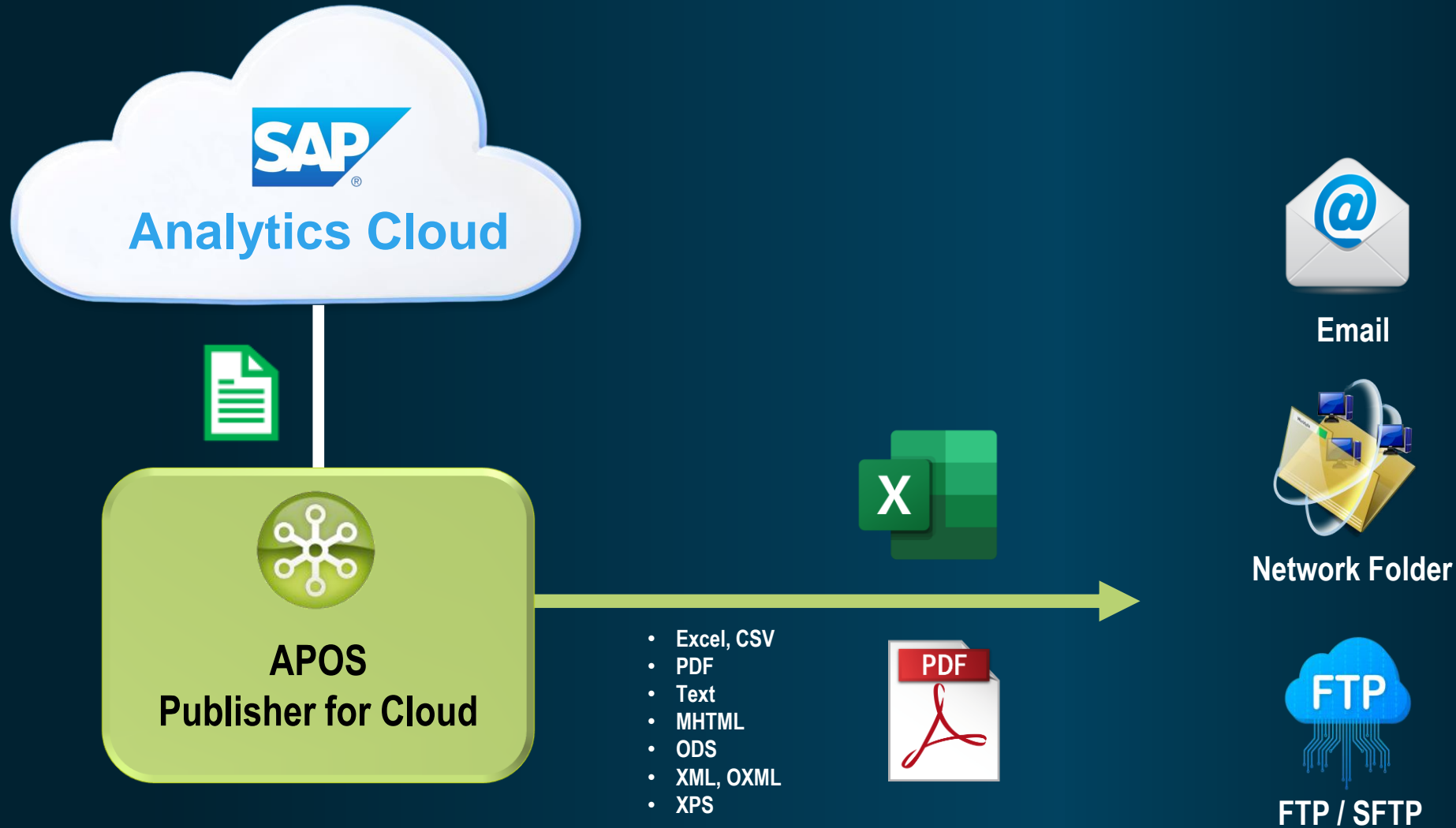
Centralize and Govern Analysis for Office Scheduling

- Monitor, manage and control Analysis for Office scheduling activities
- Understand Analysis for Office scheduling patterns
- Manage and optimize efficiency of Analysis for Office schedule patterns and related query activity
- Reduce or eliminate unnecessary scheduling and query activity

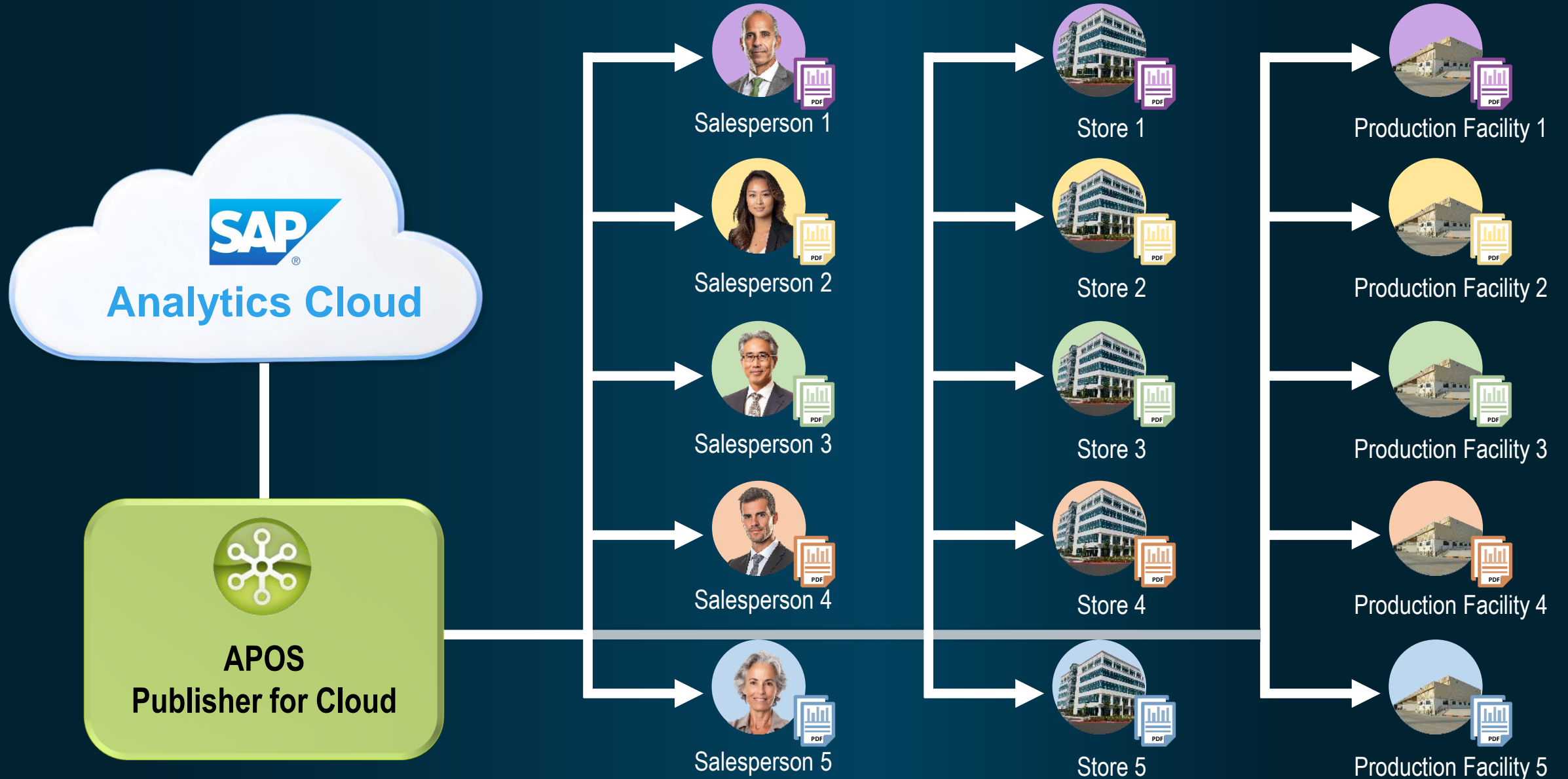
Push Analytics to Casual S/4HANA Users

- Remove information barriers related to casual S/4HANA users who have only infrequent needs for reports
- Improve overall adoption of SAC by serving information needs of those casual S/4HANA consumers
- Support broader user community information needs within S/4HANA modernization projects

APOS Publisher for Cloud



Personalized Information



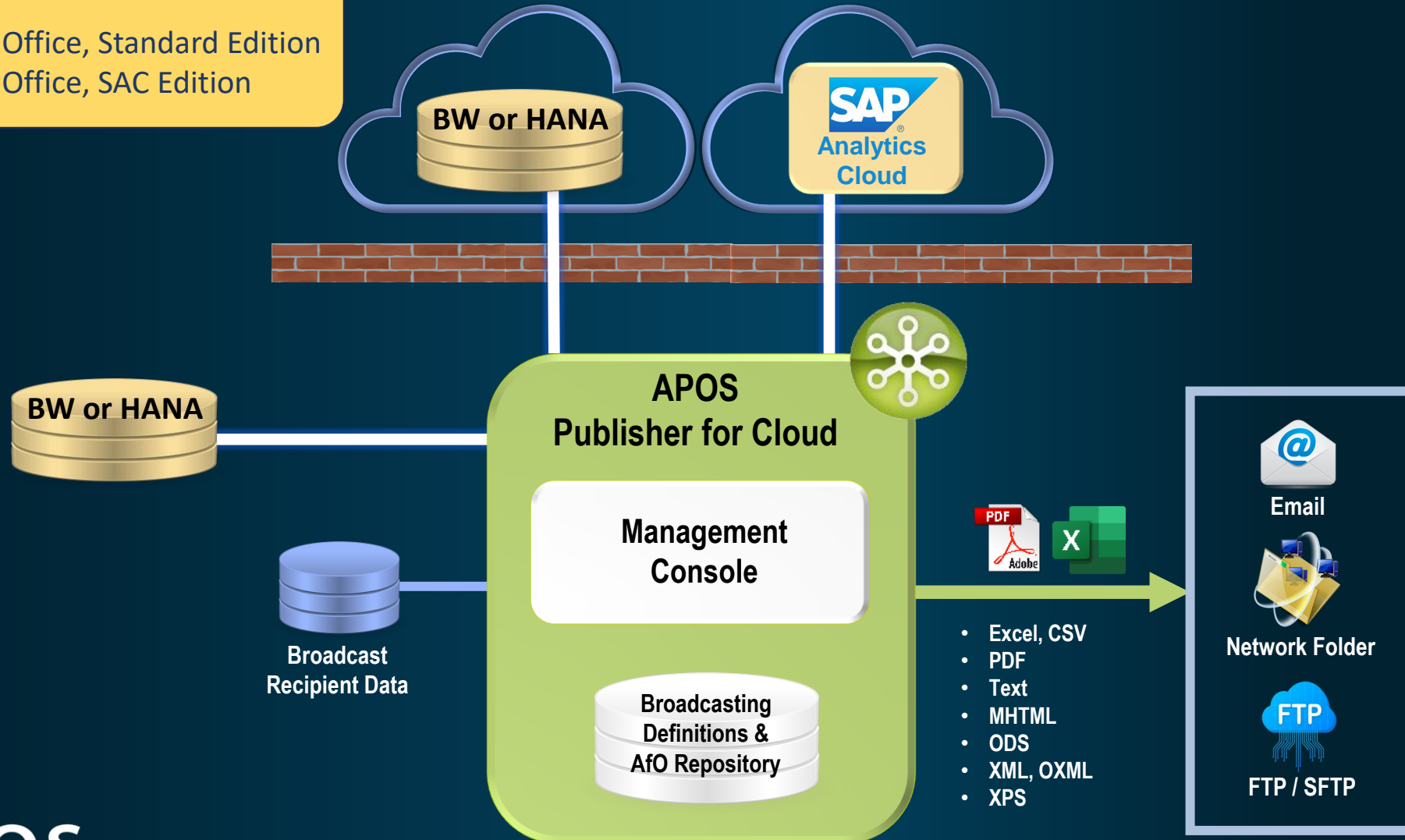


ALAN GOLDING
Solution Consulting Manager
APOS

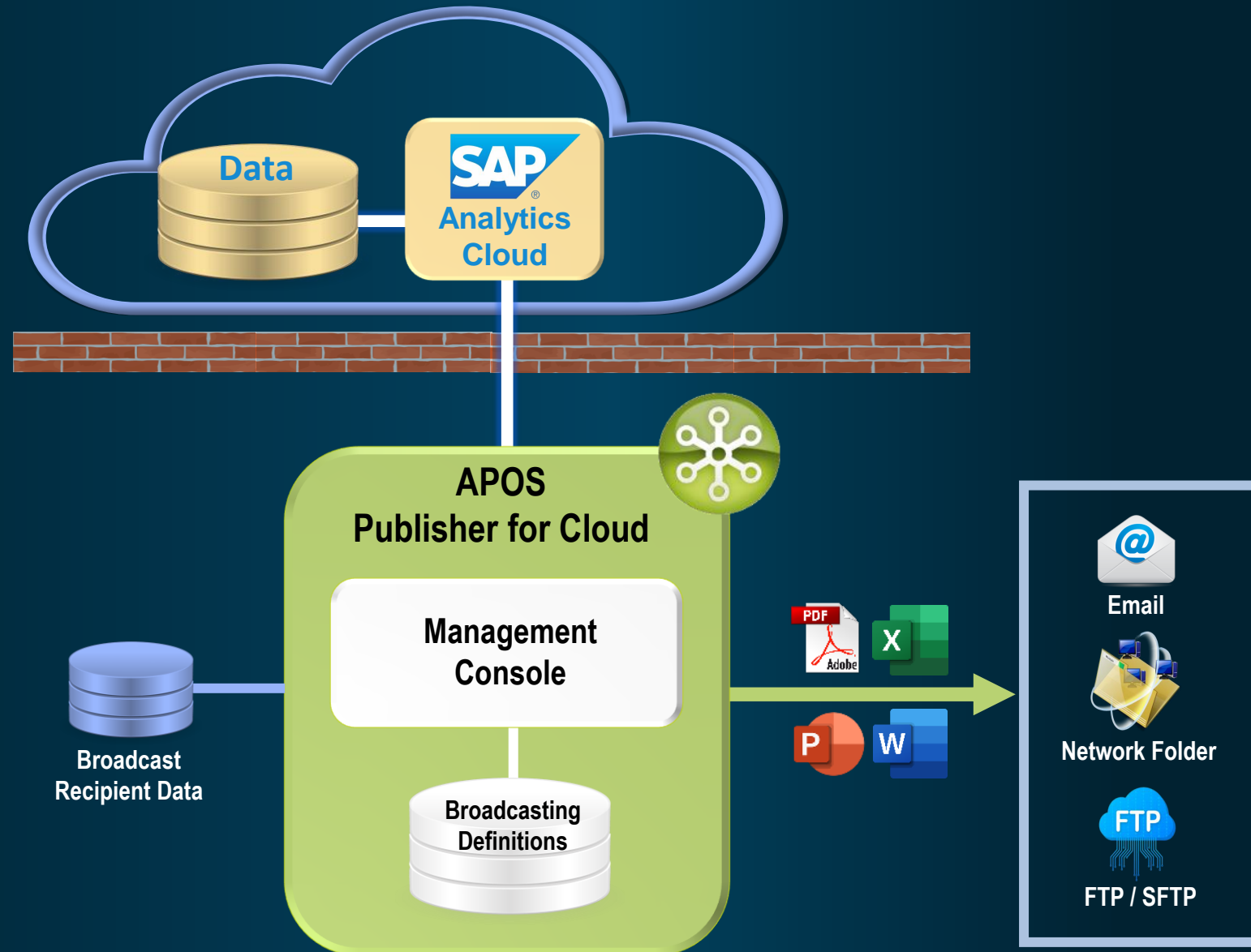
APOS Publisher for Cloud – Analysis for Office Reports

Supports:

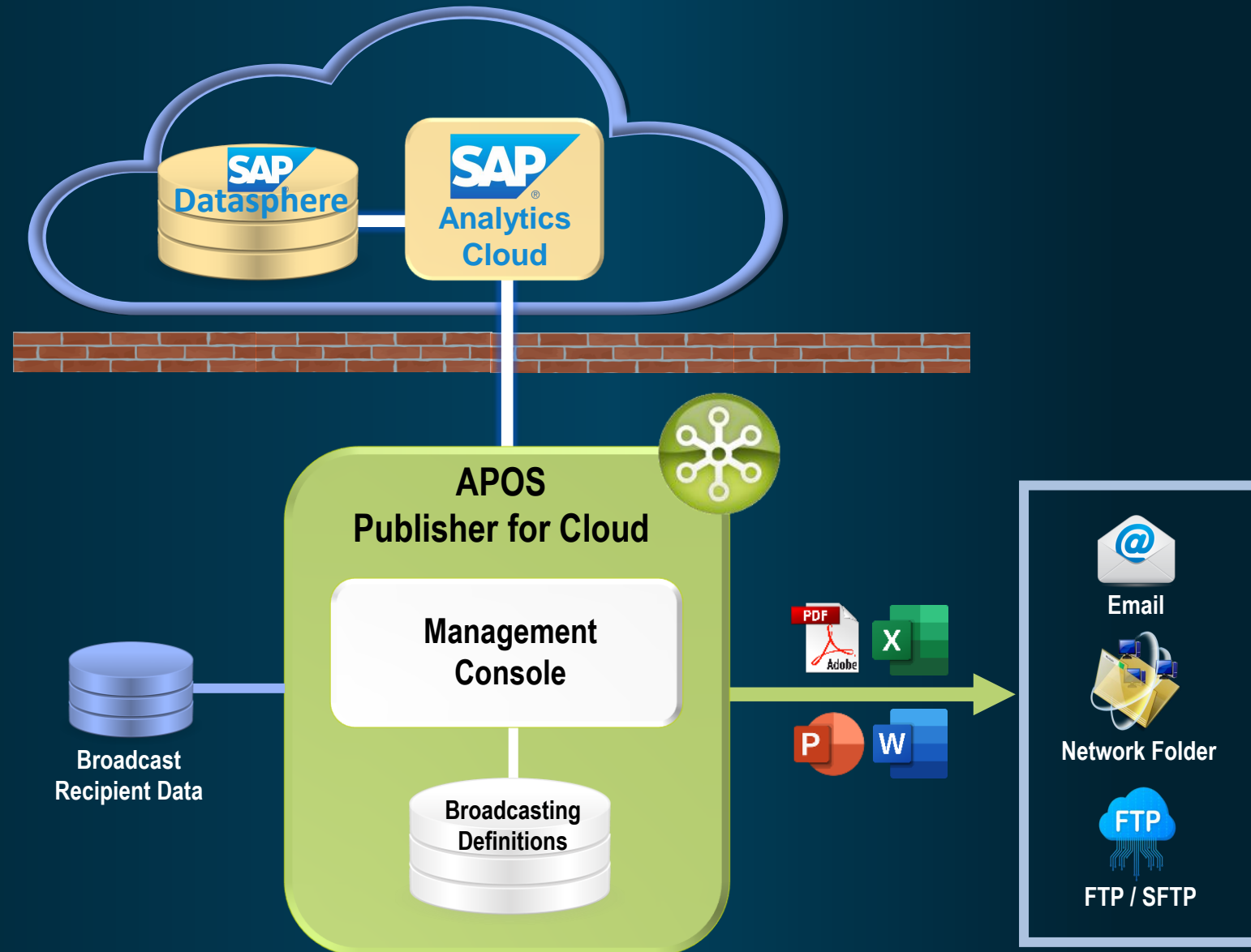
- ✓ Analysis for Office, Standard Edition
- ✓ Analysis for Office, SAC Edition



APOS Publisher for Cloud – SAC Stories



APOS Publisher for Cloud – SAC Stories



APOS Publisher for Cloud

Use Cases + Solution Overview



APOS Publisher for Cloud Summary

- Enable move to SAP Analytics Cloud
- Alternative to BusinessObjects scheduling use cases
- Modernize BEx Broadcaster use cases
- Centralize and govern Analysis for Office scheduling
- Push analytics to casual S/4HANA users



Upcoming Event

Scheduling and Broadcasting for SAP Analytics Cloud & Analysis for Office - BIG New Release!!



Oct. 2 - 11am EDT (New York) / 4pm BST (London)

Oct. 9 *en español* - 9am Ciudad de México / 10am Lima / 5pm Madrid

Oct. 29 *in Italiano* - 3pm CEST (Italy) / 10am EDT (New York)

Watch for your email for your invitation!

Register at www.apos.com

STAY CONNECTED



LINKEDIN

APOS Systems Inc.

Interested in learning more about
SAP Analytics Cloud and sharing your experience?

JOIN THE SAP ANALYTICS CLOUD GROUP TODAY!



Search for “SAP Analytics Cloud (SAC)”
on LinkedIn and request to join



QUESTIONS?

Please enter your questions in the Q&A panel.



Thank you!

Get in touch

WEBSITE

www.apos.com

EMAIL ADDRESS

info@apos.com

PHONE NUMBER

(+1) 519 894 2767

